

**DOES
EXACTLY
WHAT IT
SAYS ON
THE TIN™**

**Ronseal Promise, if you do exactly what it says on the tin,
this product will do exactly what it says on the tin.**

What is Ronseal Decking End Grain Preserver?

End Grain is vulnerable to water ingress and attack by wood rotting fungi and wood destroying insects. Ronseal Decking End Grain Preserver is a deep, penetrating preserver specially formulated to protect existing previously supplied or freshly cut timber end grain. Its unique formulation completely preserves and protects even the most porous end grains.

Why choose Ronseal Decking End Grain Preserver?

Ronseal Decking End Grain Preserver is a high performance preserver that is specially formulated to protect decking end grains from wood rotting fungi and wood destroying insects. It can be overcoated or stained with suitable Ronseal Decking Products and it is suitable for all types of hardwood and soft timber.

Where can it be used?

Ronseal Decking End Grain Preserver is suitable for all types of hardwood and softwood decking timber, including pre-treated, pressure treated and preservative impregnated timber.

Preparation

Ensure all surfaces are clean, dry and free from dust, mildew, algae, oil deposits or other material which may interfere with the penetration of the preserver.

Application and dry times

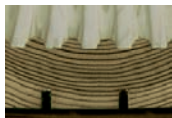
Brush apply 1 litre of product per 3-4 square metres of cross-cut end grains of timber. Allow to dry before applying a second coat, usually 24 hours. Product appears blue in can but green when dry. Allow 3 days before overcoating with a suitable Ronseal Decking Product. 750ml will preserve and protect the end grains of even the largest decks.

Clean up

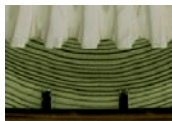
Remove as much product as possible from equipment before cleaning. Clean all equipment immediately after use with a detergent and water.

Key information

Usage areas: All types of timber end grain
Coverage: Approximately 3-4m² per litre
Dry Times: Recoat after 24 hours
Number of coats: 2



**UNTREATED AND
VULNERABLE TO ATTACK BY
WOOD ROTTING FUNGI AND
WOOD DESTROYING INSECTS**



**PRESERVED AND
PROTECTED WITH RONSEAL
END GRAIN PRESERVER**



**FOR THE BEST RESULTS USE
RONSEAL DECKING RANGE**

STATUTORY CONDITIONS RELATING TO USE

WOOD PRESERVATIVE FOR AMATEUR AND PROFESSIONAL USE AGAINST WOOD ROTTING FUNGI AND WOOD DESTROYING INSECTS. FOR USE ONLY AS A WOOD PRESERVATIVE

APPLICATION METHOD: BRUSH

APPLICATION RATE: APPLY 1 LITRE OF PRODUCT PER 3-4 SQUARE METRES OF CROSS-CUT END GRAINS OF TIMBER. ALLOW TO DRY BEFORE APPLYING A SECOND COAT.

Wear suitable protective clothing and gloves.

DO NOT CONTAMINATE FOODSTUFFS, EATING UTENSILS OR FOOD CONTACT SURFACES.

COVER WATER STORAGE TANKS before application.

This material and its container must be disposed of in a safe way.

UNPROTECTED PERSONS AND ANIMALS SHOULD BE KEPT AWAY FROM TREATED AREAS FOR 48 HOURS OR UNTIL SURFACES ARE DRY.

REMOVE AND COVER FISH TANKS AND BOWLS before application.

This product contains substances which are known to be hazardous to the environment. Do not contaminate ground, waterbodies or watercourses with chemicals or used container.

ALL BATS ARE PROTECTED UNDER THE WILDLIFE AND COUNTRYSIDE ACT 1981. BEFORE TREATING ANY STRUCTURE USED BY BATS, CONSULT ENGLISH NATURE, SCOTTISH NATURAL HERITAGE OR THE COUNTRYSIDE COUNCIL FOR WALES.

READ THE PRECAUTIONS BEFORE USE

HSE NO. 7821

Precaution

WASH ANY CONTAMINATION from skin and eyes immediately. WASH HANDS AND EXPOSED SKIN before meals and after use. Keep only in original container. Keep container tightly closed. KEEP IN A SAFE PLACE. Keep out of reach of children.

Contains

Boric Acid	0.489% w/w
Copper Carbonate Hydroxide	2.190% w/w
Propiconazole	0.050% w/w

To avoid risks to man and the environment, comply with instructions for use. This product is approved under The Control of Pesticides Regulations 1986. For use only as directed.



C00084

For further advice

**please contact:
Ronseal Technical Services**

Tel: 0114 240 9469

Ronseal Ltd.

Thorncliffe Park,

Chapelton,

Sheffield. S35 2YP

Tel: 0114 246 7171

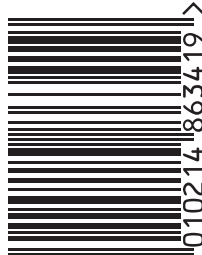
Fax: 0114 245 5629

enquiry@ronseal.co.uk

www.ronseal.co.uk

Ronseal and Ronseal Does Exactly What It Says On The Tin are registered trademarks of the Sherwin-Williams company. ©2010 Made in Great Britain.

1 litre e



5 010214 863419